

Four Seasons CERT Adaptations

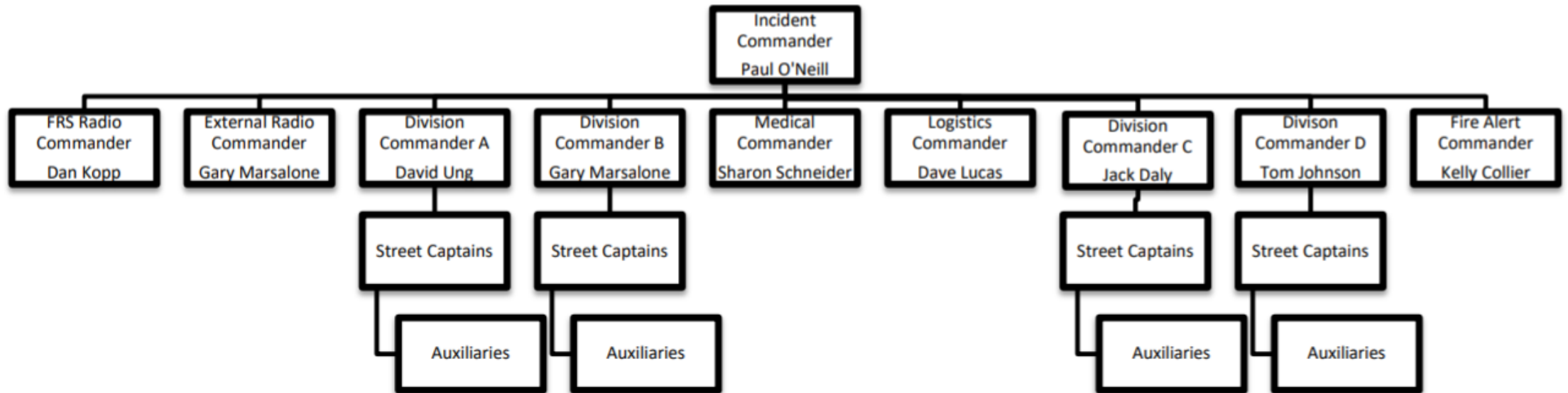
9/27/2021

Adaptions in ICS for Four Seasons

- The generic CERT ICS (Incident Command System) calls for an Incident Commander and Operations Commander. We have combined the two functions into an Incident Commander.
- The Finance/Administration Section and the Planning Section chiefs have been eliminated as unneeded.
- The Medical Commander reports to the IC.
- The Operations Groups have been superseded by the Division Structure.
- Assignment areas have been preassigned to each division, and by each Division Commander to the Street Captains. Auxiliaries are assigned to their Street Captain.
- We have added a Liaison Commander to interface with other committees such as facilities, access control, landscape and the HOA.
- We have embraced technology with FRS radios, a fully equipped RACES/ARES ham radio station, computerized forms and a full CERT website along with emergency power, first aid supplies, cribbing equipment, and more.

Four Seasons CERT Incident Command System

9/20/2021



Each of the above Commanders may assign Adjutants, Auxiliaries, & Scribes to assist them in their duties. For example, the Logistics Commander could assign an Adjutant to dispatch golf cart volunteers and issue the Adjutant a radio. The Medical Commander could have various assistants to deal with patients, dispatch, records, etc.

Four Seasons Disaster Response Duo & OK/Help Needed sign

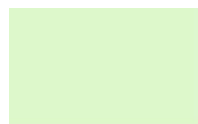
(Revised Oct 2019)

- When disaster strikes, and it will, we residents of Four Seasons should have a Disaster Response Duo to ensure we are safe and unhurt. 911 and professional first-responders will be **overwhelmed and unavailable**. We are on our own.
- The first member of this duo is a trusted next-door neighbor. This neighbor has a key to your house, or knows where you've hidden a key, for example, under a flowerpot in the back yard. This neighbor will check on you, and you must check on them when disaster strikes.
- The second member of the duo is your Four Seasons CERT Street Captain. For a better understanding of CERT, visit our website at <https://fscert.org>. The Street Captain will look for the "**Help Needed**" sign in your window.
- Residents are encouraged to place the "**OK/Help Needed**" sign in the window most visible from the street. Do so PERMANENTLY with the **blank green side displayed** in the window. Otherwise, in a disaster, you're likely to forget where you stored it, and your trusted next-door neighbor won't know either. When disaster strikes and **help is needed**, you, a family member, or the neighbor must flip the sign to "**Help Needed**" and unlock the front door. If all is well and no help is needed or you have evacuated, set the "**OK**" sign **facing out** to indicate the Street Captain need not visit. **Furthermore**, if you're OK, you might canvass and check the neighborhood for friends and neighbors who display a blank or no sign.
- The Street Captain will **skip homes** with either **No Sign** or the "**OK**" sign displayed so his or her time is spent helping those who need it.
- The Street Captain has resources he/she can bring to help you including FRS radios that will work when power and phones are down. They can communicate with CERT external radio communications center at the lodge who can communicate to city of Hemet Fire and EMS, Riverside County, CALFIRE and more. Street Captains have training, disaster supplies, and resources that may help you survive. They will visit the homes with the "**Help Needed**" **First**, and report to the command post so resources and help can be deployed. They then will return to those homes to triage, stabilize, and provide help. After all these residents are stabilized, transported, or helped, the Street Captain may visit homes with no signs or blank green signs **if not reassigned** to help other areas. No sign & blank sign homes are the last visited, if at all.
- In addition to the Response Duo, there is another key member: **You**. You must place the "**OK/Help Needed**" in your front window with the correct side/color displayed (signs available from lodge attendant.) You must seek a neighbor to be part of your disaster response duo. However, if you choose not to participate, not to do either, you may not receive help for hours, or not at all.

Plan. Prepare. Survive.

Store the signs in your window NOW

Below is how a Street Captain reads the signs



Unknown State
Same as No sign



Priority: Visit
First. Treat
First

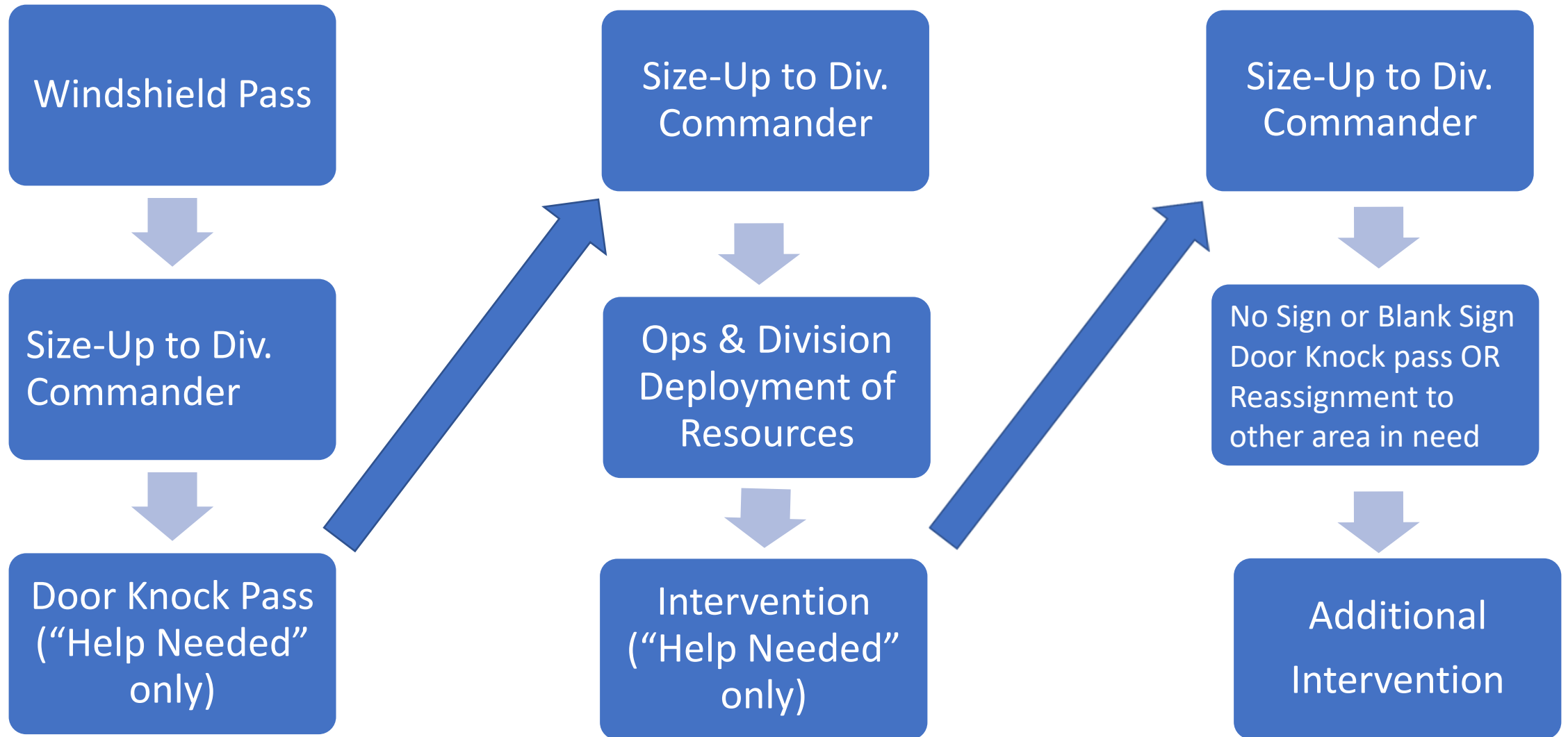


All is well
Skip this house

Incident Flow: Determine who needs help, then help them.

- CERT Activation
- Radio ON and monitored
- Collect PPE and Auxiliaries
- Windshield Pass(SC or Auxiliary)
- Report
- Door Knock Pass(SC or Auxiliary)
- Report
- Interventional Pass(**SC AND Auxiliary**)
- Report
- Windshield Pass again

Multi Pass




Is a Street Captain's task overwhelming?

NO

1. The average SC has 40 residences assigned
2. An SC (or auxiliary) can do the **Windshield pass** of the 40 in a vehicle (car/golf cart) in 5 to 30 mins
3. In past disasters, like the Northridge Earthquake, 10% of the population needed help.
4. Of the 1106 residences, we can expect 110 incidents in Four Seasons, or 4 per Street Captain for residences with a red Help Needed sign.
5. Some will have more, some less. We will move personnel and resources to those who need it.
6. In the **Door Knock pass**, the SC (or auxiliary) will note the injury or problem of those with Help Needed signs.
7. After the Division and Community command post move resources and supplies to the SC where needed, the **TRAINED SC** can begin the **Interventional pass** of the four(average) doing those who needed the most, and are survivable, first. In other words, you sort each of the injured and treat them with the mandate the greatest good for the greatest number. The **TRAINED SC** must visit all with Help Needed signs.
8. If you need to transport the victim to the designated Treatment Clinic Area (the Lodge), have a family member, auxiliary, or one of our Transport Volunteers take them. Contact the command post with your radio.
9. When ALL the entire community's Help Needed residences are resolved, transported, or otherwise finalized, an SC and auxiliaries should do another Windshield pass and may optionally canvass residences with no sign, or a blank sign.



List last updated: 09-22-2021 

Total CERT Street Captains: 36 Total CERT Auxiliaries: 68

This table is sortable by clicking on the arrows after column name.

CERT I.D. ▾	First Name ▾	Last Name ▾	Address ▾	Phones ▾	Email ▾	Trained? ▾	D-S ▾	Resp. ▾	Reports to ▾
302	Suzanne	McGowan	7747 Dutra	831-905-6203	gandsmcgowan@gmail.com	Yes	D 2	St. Capt.	
301	Jackie	Severa	605 Olazabal	760-464-2309	jsevera67@gmail.com	No	C 3	Auxiliary	Paul O'Neill
300	Mary Anne	Hegedus	670 Olazabal	951-743-7269	mah.hegedus@gmail.com	No	E 1	Auxiliary	Paul O'Neill
273	David	Lucas	9183 Stephenson	406-599-8998	daveanna1@twc.com	Yes	E 2	St. Capt., EPC	
268	Steve	Sanford	483 Lyle	951-200-0300	sanfordsr1@gmail.com	No	C 2	Auxiliary	Hortencia & Juergen Roesler
269	Nancy	Urtado	483 Lyle	951-200-0566	nancyurtado2006@yahoo.com	No	C 2	Auxiliary	Hortencia & Juergen Roesler

Storage Shed Inventory

[Download and print](#)

Storage Bin #	Qty	Description	Sub Qty	Description
1	3	Wound Packs	2	12x12 Pads
			4	5 x 9 Pads
			4	4 x4 Drain Sponges
1	10	Wound Packs	2	8/10 ADP
			2	5x9 ADP
			2	4 x 4 Drain Sponges
			2	6 x6 PermaForm Adhesive Dressing
			2	2x2 Sponges
1	2	Burn Kits	2	BurnShield 4"/4" dressing
			2	Roll of Gauze
2	5	Moist wipes pkgs		
2	2	Boxes	35	4 x 4 Gauze Pads
2	2	2" Rolled gauze		
2	1	3" Secure-Flex Wrap		
2	1	4" Rolled gauze		
2	1	Box	9	3 x4 Non-stick pads
2	2	Rolls 1/2 " adhesive tape		

Partial list of store room inventory. These tools are available to you by contacting the Logistics Commander via FRS radio.

- Your Division Commander should inform you when new Street Captain Size-Ups are revised and available. Some DCs will email .pdf files to you, others will refer you to this page. You can view, download, and print from your browser. You can also use Acrobat to print the downloaded version. **Print them and place them in your Street Captain binder. You must have them at hand during a disaster.**
- To successfully print them, you **must set the correct settings** in the Print dialog. Different apps and different printer manufacturers will have slightly different settings; however, many share similar dialogs. You may need to set the orientation to **LANDSCAPE**, it may be auto-set and display landscape. Firefox may flip the image sideways and say it's Portrait. **Look at the preview** to ensure it looks correct. It also must be set to **Fit to Paper, Fit to Printable Area, Shrink Oversized Pages, or something similar**. You probably will need to click on the down-arrow **More Settings** to view these menu items. You can also set it to Color (optional), print all pages, etc.

Click on a title below to view, download or print your Size Up for your division.

[Div. A Street Captain Size-Up\(.pdf\)](#)

[Div. B Street Captain Size-Up\(.pdf\)](#)

[Div. C Street Captain Size-Up\(.pdf\)](#)

[Div. D Street Captain Size-Up\(.pdf\)](#)

Below are typical dialogs(click to view) you would see in the free Acrobat Reader DC, the Chrome browser, and the Edge browser. If you find your printouts look a mess, recheck your settings noted above. Lost? Contact your Division Commander or the webmaster.

DIV	STREET ADDRESS	Pwr	Street Captain	SC Substitute	SIGN			PEOPLE			PETS			HAZARDS			BURNING			HOUSE		
					HLP	OK	NO	NT ?	IM	DL	DE	INJ	TRP	ROA	H2O	GAS	ELE	FEN	TRE	HOU	L	M
A-101	201 Eagle		Sue Malarkey																			
A-102	202 Eagle		Sue Malarkey																			
A-103	207 Eagle		Sue Malarkey																			
A-104	214 Eagle		Sue Malarkey																			
A-105	215 Eagle		Sue Malarkey																			
A-106	221 Eagle		Sue Malarkey																			
A-107	225 Eagle		Sue Malarkey																			
A-108	226 Eagle		Sue Malarkey																			
A-109	230 Eagle		Sue Malarkey																			
A-110	233 Eagle		Sue Malarkey																			
A-111	239 Eagle		Sue Malarkey																			
A-112	240 Eagle		Sue Malarkey																			
A-113	247 Eagle		Sue Malarkey																			
A-114	248 Eagle		Sue Malarkey																			
A-115	251 Eagle		Sue Malarkey																			
A-116	252 Eagle		Sue Malarkey																			
A-117	196 Four Seasons		Rick Brairton																			
A-118	200 Four Seasons		Rick Brairton																			
A-119	204 Four Seasons		Rick Brairton																			
A-120	208 Four Seasons		Rick Brairton																			
A-121	212 Four Seasons		Rick Brairton																			
A-122	216 Four Seasons		Rick Brairton																			
A-123	220 Four Seasons		Rick Brairton																			
A-124	224 Four Seasons		Rick Brairton																			
A-125	228 Four Seasons		Rick Brairton																			
A-126	232 Four Seasons		Rick Brairton																			
A-127	236 Four Seasons		Rick Brairton																			
A-128	240 Four Seasons		Rick Brairton																			
A-129	244 Four Seasons		Rick Brairton																			
A-130	248 Four Seasons		Rick Brairton																			
A-132	256 Four Seasons		Rick Brairton																			
A-133	260 Four Seasons		Rick Brairton																			
A-134	264 Four Seasons		Rick Brairton																			
A-135	268 Four Seasons		Rick Brairton																			
A-136	272 Four Seasons		Rick Brairton																			
A-137	8152 Omeara		Donna Morrell																			
A-138	8161 Omeara		Donna Morrell																			
A-139	8172 Omeara		Donna Morrell																			

* =Power Dependent

Division I.D,

HLP= Help NO = No sign or blank NT=Not Determined IM=Immediate DL=Delayed DE=Dead INJ= Injured TRP=Trapped ROA=Roaming ELE=Electric FEN=Fence TRE=Tree/Bush HOU=House QUAKE DAMAGE LMH: Lite,Moderate, Heavy

DIV	STREET	Pwr	Street	SC	SIGN			PEOPLE			PETS			HAZARDS			BURNING			HOUSE		
					HLP	OK	NO	NT ?	IM	DL	DE	INJ	TRP	ROA	H2O	GAS	ELE	FEN	TRE	HOU	L	M
IND	ADDRESS		Captain	Substitute																		
A-370	209 Firestone		Sue Malarkey																			
A-371	215 Firestone		Sue Malarkey																			
A-372	219 Firestone		Sue Malarkey																			
A-373	223 Firestone		Sue Malarkey																			
A-374	227 Firestone		Sue Malarkey																			
A-375	231 Firestone		Sue Malarkey																			
A-376	235 Firestone		Sue Malarkey																			
A-377	239 Firestone		Sue Malarkey																			
A-378	240 Firestone		Sue Malarkey																			
A-379	243 Firestone		Sue Malarkey																			
A-380	244 Firestone		Sue Malarkey																			
A-381	246 Firestone		Sue Malarkey																			
A-382	247 Firestone		Sue Malarkey																			
A-383	248 Firestone		Sue Malarkey																			
A-384	251 Firestone		Sue Malarkey																			
A-385	252 Firestone		Sue Malarkey																			
A-386	255 Firestone		Sue Malarkey																			
A-387	256 Firestone		Sue Malarkey																			
A-388	259 Firestone		Sue Malarkey																			
A-389	260 Firestone		Sue Malarkey																			
A-390	263 Firestone		Sue Malarkey																			
A-391	266 Firestone		Sue Malarkey																			
A-392	267 Firestone		Sue Malarkey																			
A-393	269 Firestone		Sue Malarkey																			
Sum																						

Each column on each page should have a subtotal. All subtotals should be added and the result placed on the sum line. When asked for by Net Control, the sums should be relayed to the Lodge Command and Division Commander.

Medical Information Form

Medical Information form to be stored on your refrigerator

[Download/Print Now](#)

CERT – Street Captain Checklist

[Download Print Now](#)

Street Captain recommended go kit

[Download and print](#)

CERT Form Package

This download contains a zip file containing CERT 2-7

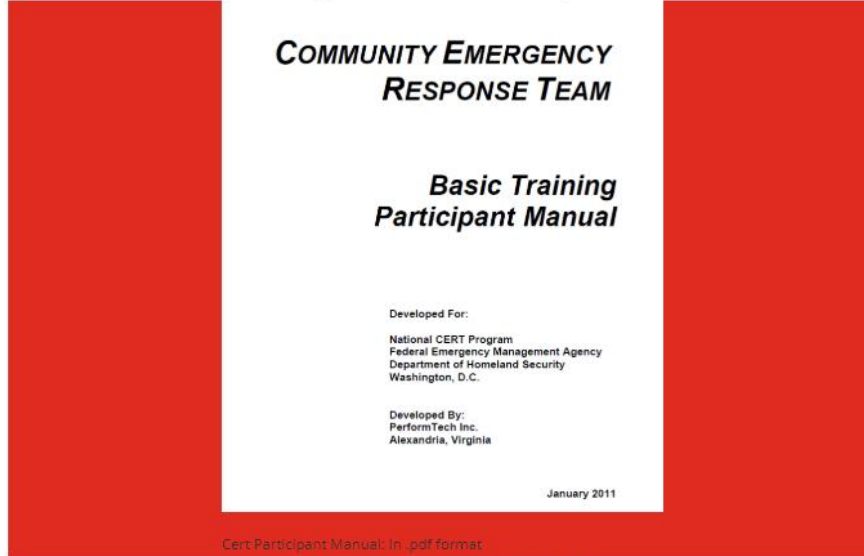
[Download Now](#)

**Print
these and
insert in
SC binder**

Fire Mitigation

- CERT members assist residents to do the following:
 - Open garage door manually
 - Move vehicle to driveway
 - Move ember targets, e.g., patio furniture, propane tanks to garage
 - Inspect for flammable items and move them
 - Close all windows and doors
 - Suggest that residents shelter-in-place unless directed by fire department to do otherwise.

Click on image to view, download, or print manual



[Cert-Participant Manual: In .pdf format](#)

Click on image to view the video



[CERT Training: Extricate a victim underneath and heavy object](#)



CERT Manual

Training Videos Plus this presentation

